

UNITED WAY FUNDED ORGANIZATIONS PROVIDING SERVICES TO CLAYTON COUNTY RESIDENTS:

- | | |
|---|---------------------------------------|
| A Friend's House | Goodwill of Georgia |
| AADD | Hillside Hospital |
| American Cancer Society | Jewish Family & Career Services |
| Association on Battered Women-Securus House | Latin American Association |
| Atlanta Legal Aid | Nicholas House |
| Atlanta Urban League | Odyssey Counseling |
| Auditory-Verbal Center | Our House |
| Big Brothers Big Sisters of Metro Atlanta | Partnership Against Domestic Violence |
| Boy Scouts Atlanta Area Council | Planned Parenthood |
| Boys & Girls Clubs of Metro Atlanta | Positive Growth |
| Catholic Charities | Premier Academy |
| Center for the Visually Impaired | Project Open Hand |
| Cherokee Family Violence Center | RRC Home Ownership |
| Chris KIDS | Saint Joseph's Mercy Care Services |
| Clayton County Extension Service – ABC's of Parenting | The Salvation Army |
| Clayton County Family Care | Scottdale Child Development Center |
| Diabetes Association | Sheltering Arms |
| ExceptionalOPS | Sickle Cell Foundation of Georgia |
| Families First | Tapestry Youth Ministries |
| Haven House | USO of Georgia |
| Hearts To Nourish Hope | Visiting Nurse Health System |
| Gate City Day Nursery | VOX Teen Communication |
| Girls Scouts of Greater Atlanta | YWCA of Greater Atlanta |
| | YWCA Northwest Georgia |

CLAYTON COUNTY

HELPING MOTHERS DELIVER HEALTHY BABIES



United Way in Clayton County
 107 Westridge Industrial Blvd.
 McDonough, GA 30253
 678.623.2876 tel • 770.957.6381 fax
unitedwayatlanta.org

**GIVE. ADVOCATE. VOLUNTEER.
 LIVE UNITED**



United Way of
Metropolitan Atlanta

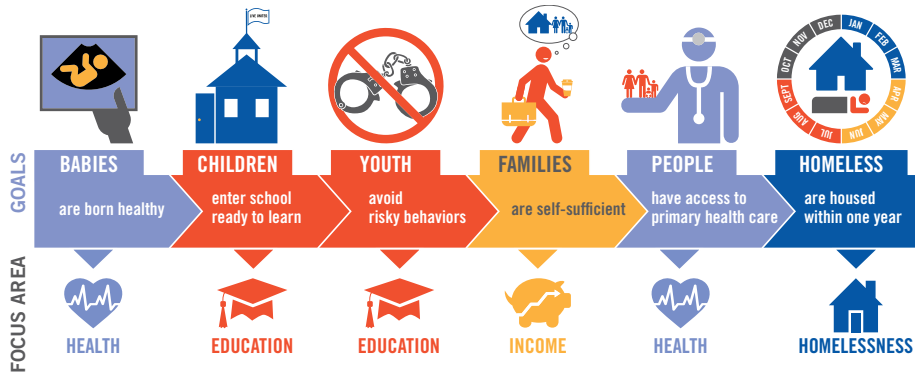
**GIVE. ADVOCATE. VOLUNTEER.
 LIVE UNITED**



United Way of
Metropolitan Atlanta

WHY UNITED WAY

United Way improves lives by mobilizing the caring power of our community to advance the common good. We focus on the building blocks for a good quality of life — education, income, health and ending homelessness. United Way unites nonprofits, businesses, government, donors and volunteers to keep kids learning and in school, help people achieve financial stability, strengthen our health safety net, and end chronic homelessness. Join us and become a part of the lifeline.



CLAYTON COUNTY 2011 ADVISORY BOARD

Raymond Baggary, Chair, Answer Metro USA
 Yulonda Beauford, Clayton County Chamber of Commerce
 Fred Bryant, Forest Park/Fort Gillem Local Redevelopment Authority
 Rhonda Burnough, Clayton County Public Schools
 Dorothy Cochran, community volunteer
 Harold E. Craig Jr., Atlanta Technical College
 Corine Deyton, mayor of Forest Park
 Evelyn-Wynn Dixon, mayor of Riverdale
 Veronica Elie, Fidelity Bank
 Chuck Fischer, Clayton County DFCS
 Don Foster, Foster & Foster, PC
 Sandy Golden, community volunteer
 Virginia Gray, community volunteer
 Dorothy Herzberg, metro Board representative, Career Resource Center
 Iris Jessie, City of Riverdale
 Curt Lacy, community volunteer

Lydia Murphy, community volunteer
 Angela Redding, City of Forest Park
 Carl Rhodenizer, community volunteer
 Paula Sherrer, community volunteer
 Ron Shipman, Georgia Power
 Detrick Stanford, Clayton County Parks & Recreation
 Oliver Wood, community volunteer

STAFF SUPPORT

Lynda Smith, regional director
 Claire Cline, regional director
 Jackie Prillaman, regional coordinator
 Kim Sumpter, director, Healthy Babies, Community Engagement
 Sheri Willis, development officer, Resource Development

HELPING MOTHERS DELIVER HEALTHY BABIES

Some pregnant women are excited when they arrive at their prenatal care appointments. And some are also anxious.



Jewell Allen Walker, a certified nurse midwife and women's health nurse practitioner at New Millennium Obstetrics & Gynecology, knows her patients have questions. But often they are too afraid or embarrassed to ask. Mothers-to-be need prenatal care and support to have the best chance for a healthy, full-term baby. Walker believes a different approach would better meet her patients' needs.

In a new partnership between the Riverdale practice and United Way of Metropolitan Atlanta, Clayton County will become one of three Georgia counties to have a **CenteringPregnancy** site, a group model of prenatal care, developed by the Centering Healthcare Institute, that offers women the clinical care they need and a support network of other expectant moms.

In Clayton County, the goal of the **CenteringPregnancy** program is to decrease the number of low birth weight babies.

"Issues of prematurity and low birth weight are not just a lack of access to prenatal care," says Kim Sumpter of United Way. "The factors that impact low birth weight are complex and we are finding through research studies and anecdotally that stress and lack of social support play a key role in a mom delivering too early. Through **CenteringPregnancy**, we are normalizing the process of pregnancy for women while increasing their social and emotional support. They are building relationships and a support system with other mothers."

The **CenteringPregnancy** program organizes classes of eight to 12 women based on their due dates. About 16 weeks into pregnancy, each woman will join a class and continue to meet with the same group for 10 sessions prenatally and one session postpartum. The group facilitator will perform a medical assessment on each patient and then open the floor for group discussion and questions.

"The **CenteringPregnancy** approach reduces emergency room visits and worried patient calls because these patients are more educated due to what they learn in their group classes," says Walker, the midwife. "The program gives women the chance to share with one another and build their own community while going through pregnancy."