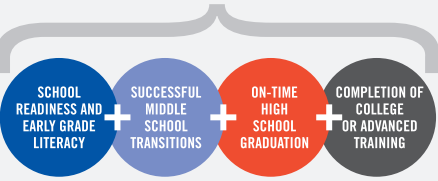


COMMUNITY ACTION PLAN OVERVIEW: EDUCATION

Children enter school ready to learn and graduate prepared for careers



Youth avoid risky behaviors



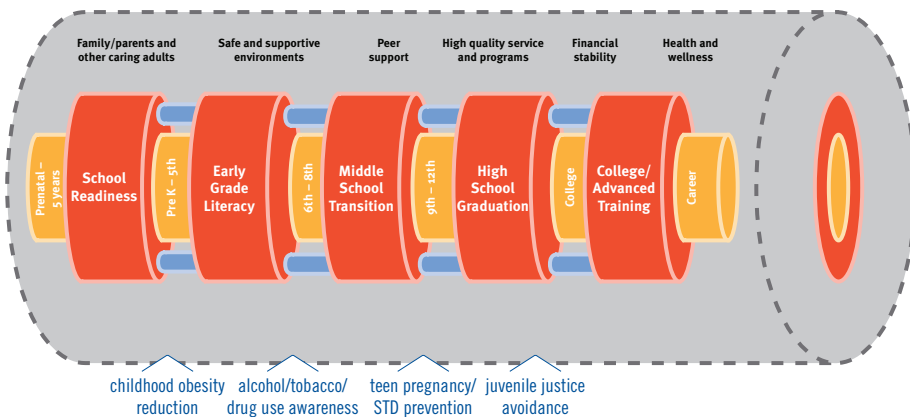
2030 UWMA COMMUNITY ASPIRATIONS

- All infants and toddlers achieve the developmental skills necessary to be successful before kindergarten
- All children (pre-kindergarten through 3rd grade who will enter school prepared to success and on a path to read to learn by the end of the 3d grade
- All community residents acquire a college degree or a credential of value by age 26 (Age based on RB21 parameters for obtaining post-high school credential)
- All young people have healthy relationships and a strong sense of hope, well being and engagement. With the hopes that the odds for young people living healthy, productive and connected lives in metropolitan Atlanta will increase from 4 in 10 to 7 in 10. (Based on research by Gambone, Connell and Klem 2002)

2014 COMMUNITY TARGETS

- UWMA will mobilize the community partners to adopt a common definition for school readiness and a tool to measure it.
- The percentage of metro Atlanta students who exceed 3rd grade reading standards will increase from 41% to 51%. (Aligns with the Georgia Grade Level Reading Campaign and GEEARS (Georgia Early Education Alliance for Ready Students))
- UWMA will mobilize community partners and school districts to adopt and administer the Gallup Student Poll to measure students' sense of well-being, hope and engagement in 3 out of 17 school districts.
- There will be a 9.2% increase of metro Atlanta residents 18 years to 24 years of age who have, at minimum, an Associate Degree. (Aligns with the Complete College America/Georgia recommended goal to have 6 out 10 adults with a degree or certificate by 2020)
- Increase the high school graduation rate (more work needs to be done)

Birth–21 continuum of learning



0–21 education pipeline

Our goal is to keep children in this pipeline from birth to age 21.

Research-based issues/strategies

These five strategies work in conjunction to ensure that children stay in the pipeline through each phase of growth.

Learning and engagement support

Keeping children in the pipeline is only possible with the following critical elements acting as insulation: family and caring adults, safe and supportive environments, peer support, high-quality services and programs, financial stability, and health and wellness.

Youth avoid risky behaviors

Keeping young people in the pipeline from ages 0–21 is critical in order for them to avoid risky behaviors, which reside outside the pipeline and apply constant pressure inward. Strategies for countering risky behaviors are policy, teen leadership, and parent involvement.

EDUCATION DASHBOARD

Research shows that investments in young people must begin early and be sustained for more than 20 years. Therefore, UWMA has chosen to strategically focus its investments on supporting this insulated pipeline of programs and services that prepares children and youth to be ready for college, work and life. It is also designed to monitor and gauge how children and youth learn and grow across a range of areas. These areas include:

- **learning (developing positive basic and applied academic attitudes, skills and behaviors);**
- **thriving (developing physically healthy attitudes, skills and behaviors);**
- **connecting (developing positive social attitudes, skills and behaviors); and**
- **leading (developing positive civic attitudes, skills and behaviors).**

| | Early Childhood birth-5 years old | Elementary Age 6-10 years old | Middle/High School 11-18 years old |
|-------------------|---|--|--|
| LEARNING | Provide child care subsidies for children birth to 5 years old | Implement high quality out of school time programs for kindergartners to third graders | Provide mentoring opportunities for fourth to 12th graders |
| THRIVING | | | |
| CONNECTING | | | |
| LEADING | Implement high quality summer learning programs for 3-5 year-olds | Implement Parent/Family Engagement Strategies for kindergartners to third graders | Implement high quality out of school time programs for fourth to 12th graders |
| | Implement Parent/Family Engagement Strategies for children birth to 5 years old | | Provide leadership and service learning opportunities for fourth to 12th graders |
| | Provide transition coaches to support school readiness and kindergarten success | | Implement Parent/Family Engagement Strategies for fourth to 12th graders |